

PINAWA

(Sheltered Waters)

1906 - 1951





PINAWA

(Sheltered Waters)

1906 - 1951

Lindsay Ingram P.Eng (Ret.)



Pinawa



- **A Short Visual History of the Pinawa Power Plant.**
- **Built and Owned by the Winnipeg Electric Co. and Commissioned in 1906, it was Retired in 1951.**
- **Initial Rating 14,000 kW, Ultimate Rating 22,000 kW.**



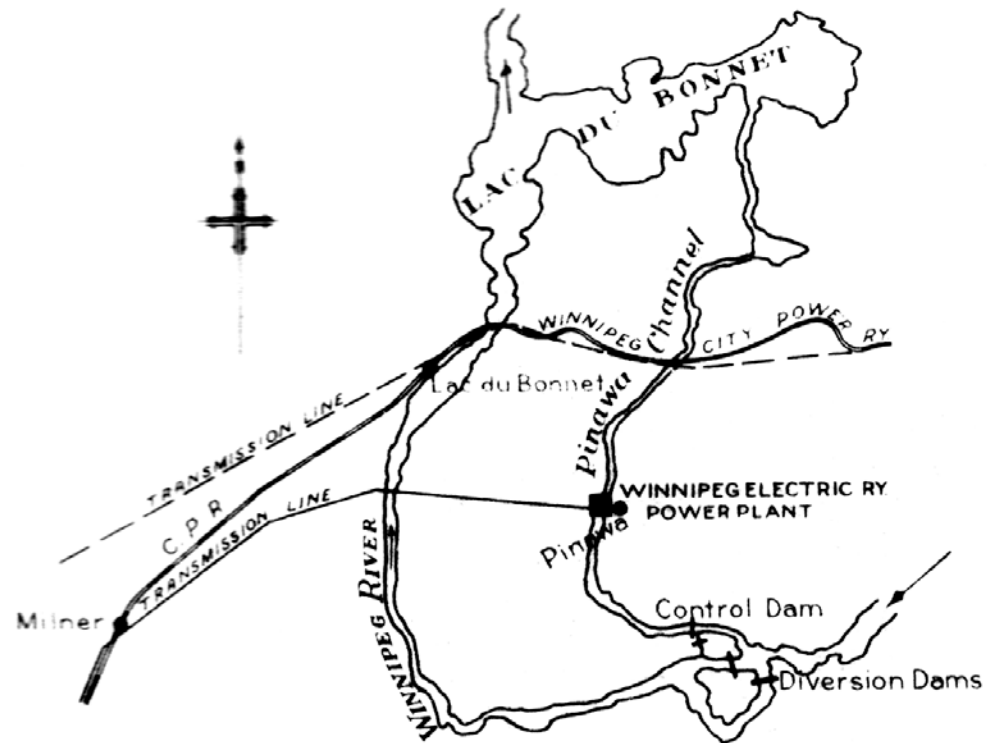
Some Facts:

- Cost \$3,000,000
- Concrete mix: 1 part cement, 3 parts sand, 5 parts broken stone
- Total amount concrete: 24,000 cubic yards
- Total amount granite excavation: 446,000 cubic yards of which 274,000 cubic yards was from the intake channel

Pinawa

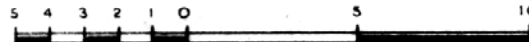


Key Plan



GENERAL KEY PLAN

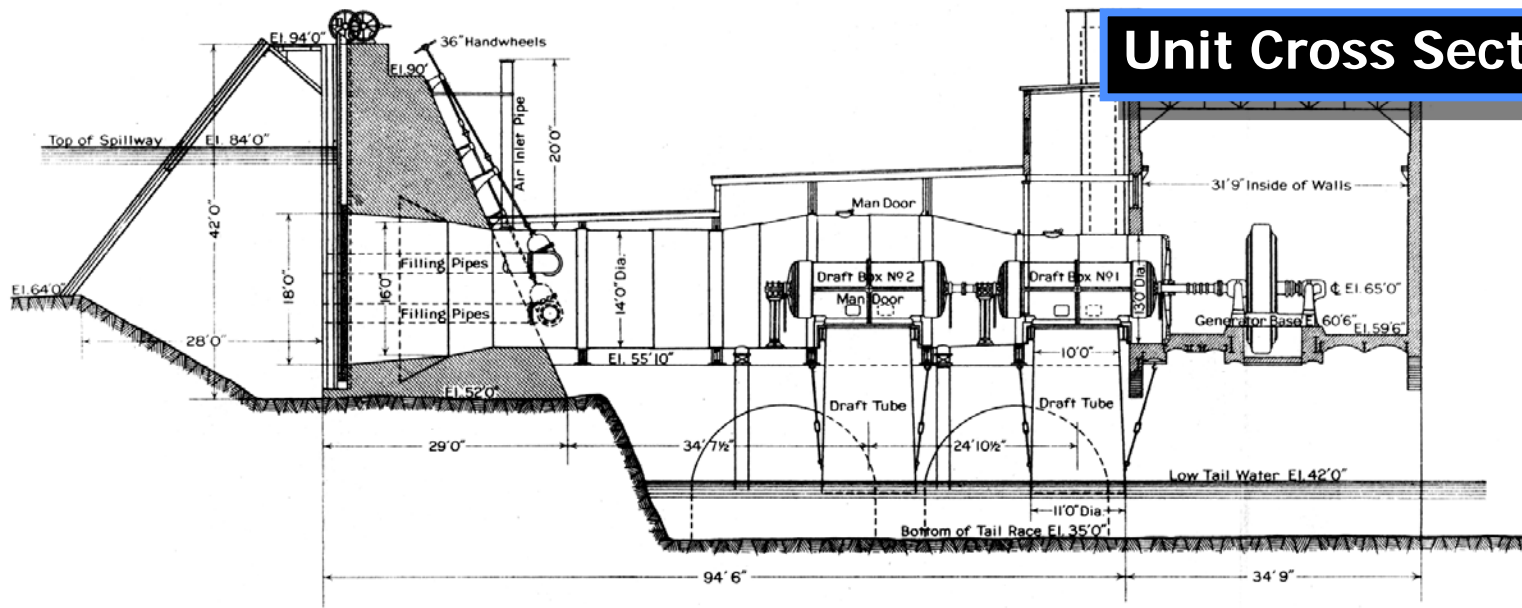
Scale of Miles



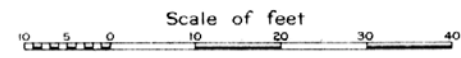
Pinawa



Unit Cross Section



TYPICAL SECTION OF INTAKE DAM, PENSTOCK & POWER HOUSE



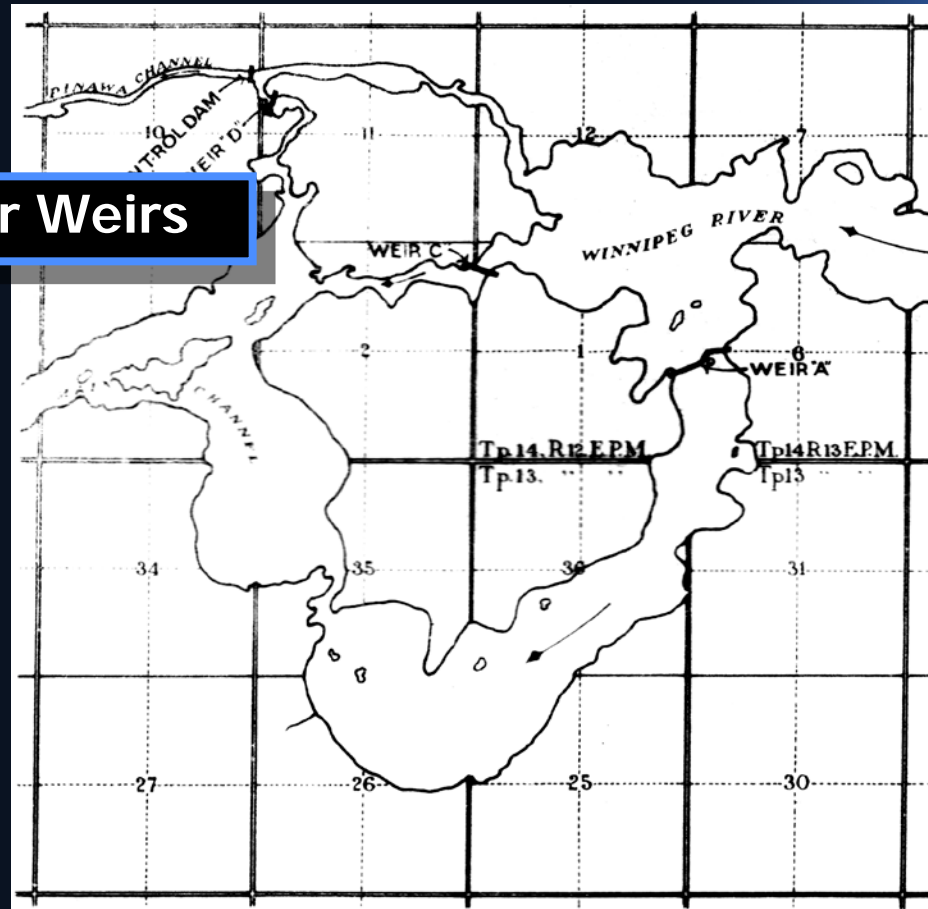
El. 791-94 W.P. Station = 0-0 Winnipeg Electric Ry. Co. datum

NOTE:
 PLAN BASED ON BLUE PRINTS FILED
 BY THE WINNIPEG ELECTRIC RAIL-
 WAY COMPANY.

Pinawa



Winnipeg River Weirs



KEY PLAN OF WEIRS

Scale of Miles



Pinawa



**Intake Channel
Excavation**

Pinawa



Winnipeg River
Main Weir

Pinawa



**Intake channel
Control Structure**

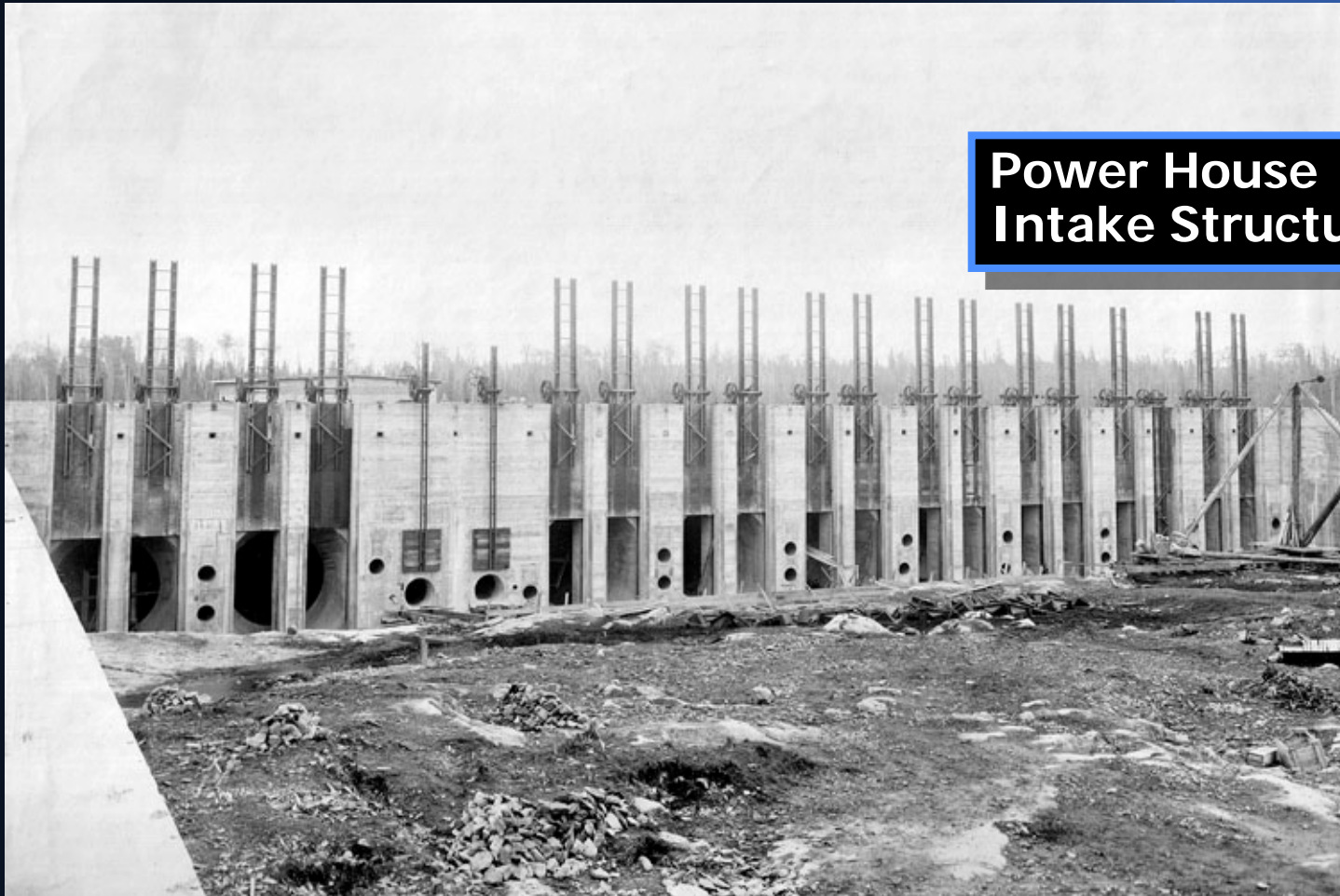


Pinawa



**Power House
Intake Structure**

Pinawa

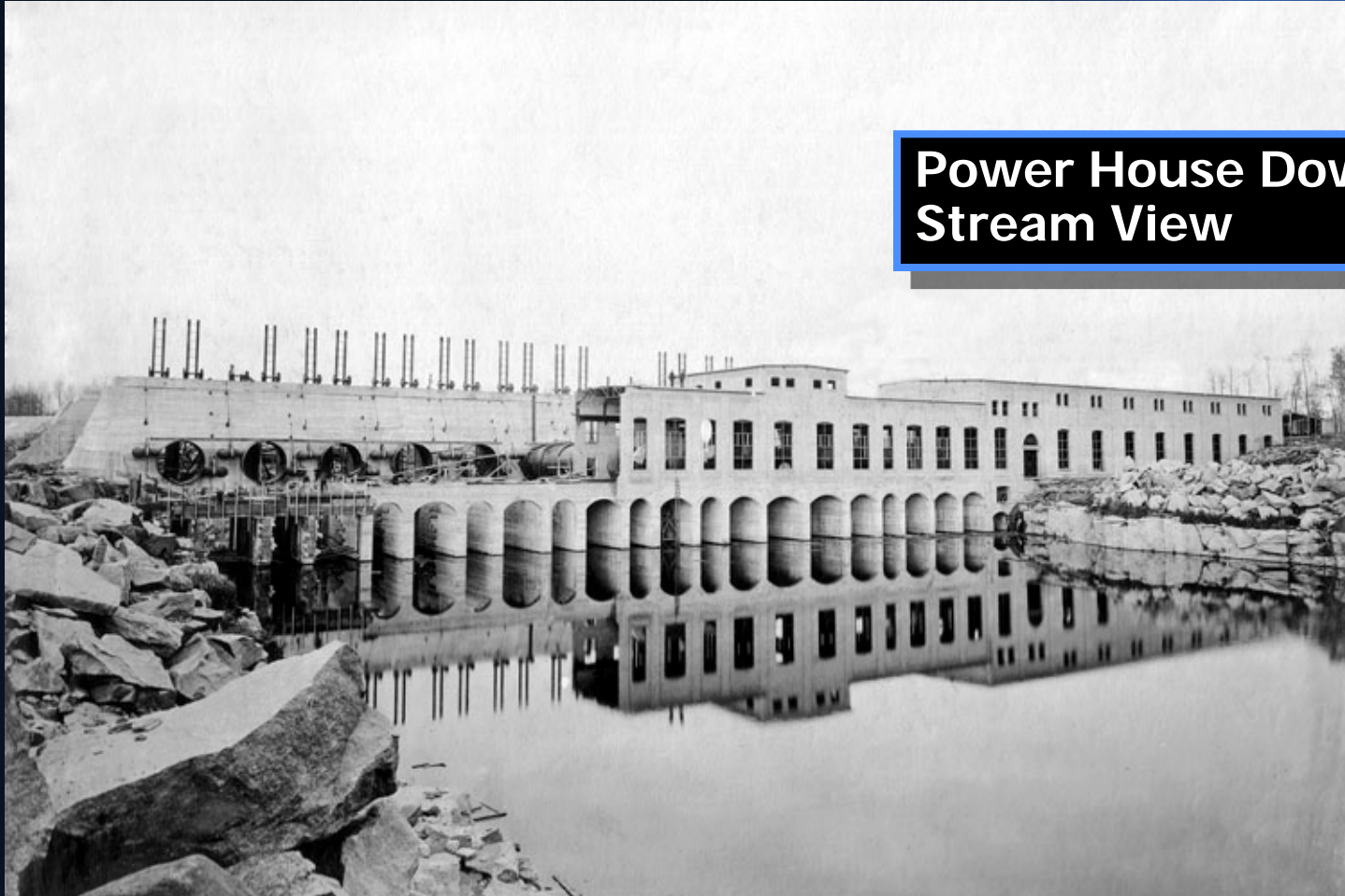


**Power House
Intake Structure**

Pinawa



Power House Down Stream View



Pinawa



Overflow Spillway

Pinawa



Spillway in Winter

Pinawa



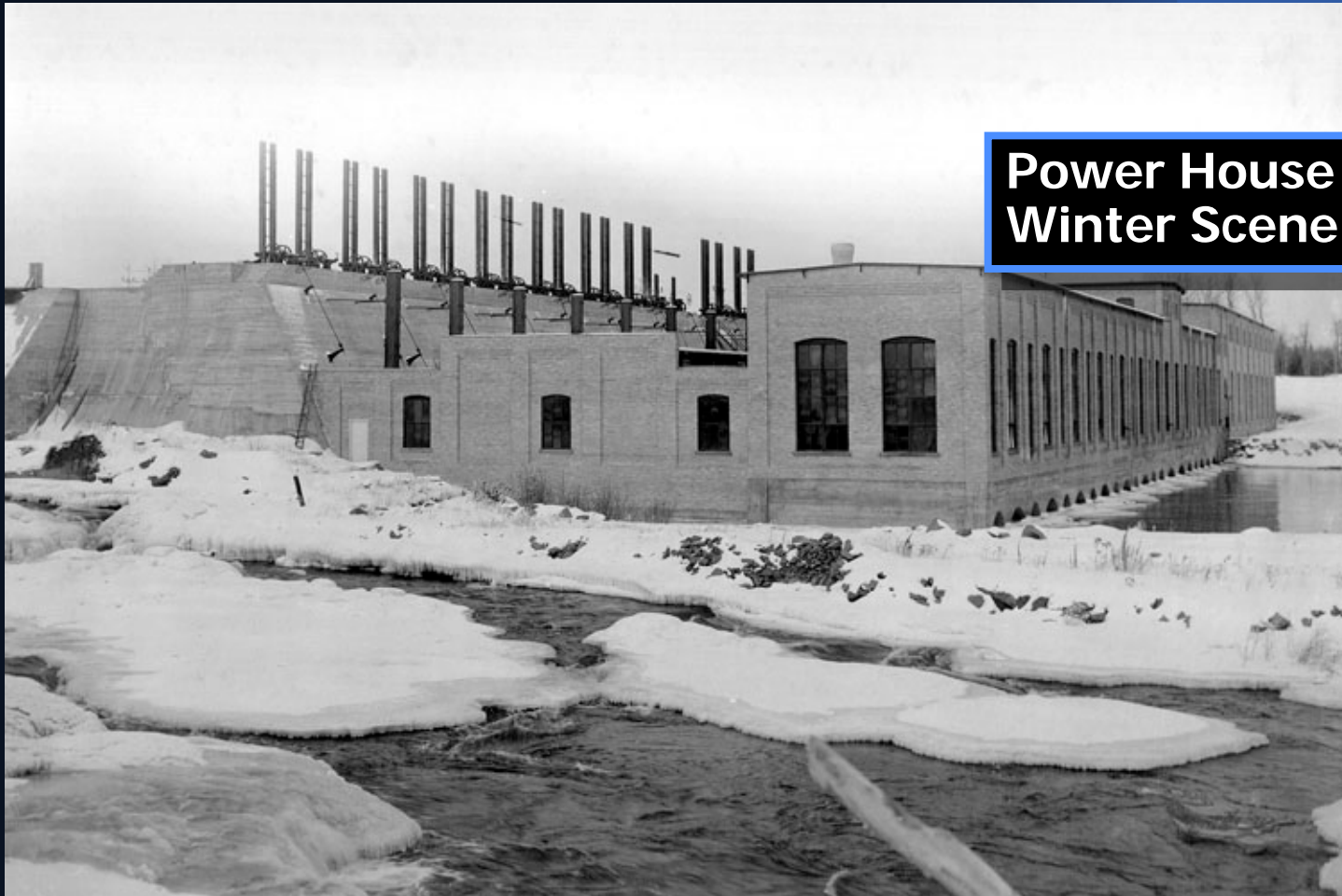
View from Intake Gate Structure

Pinawa



Spillway

Pinawa



**Power House
Winter Scene**

Pinawa

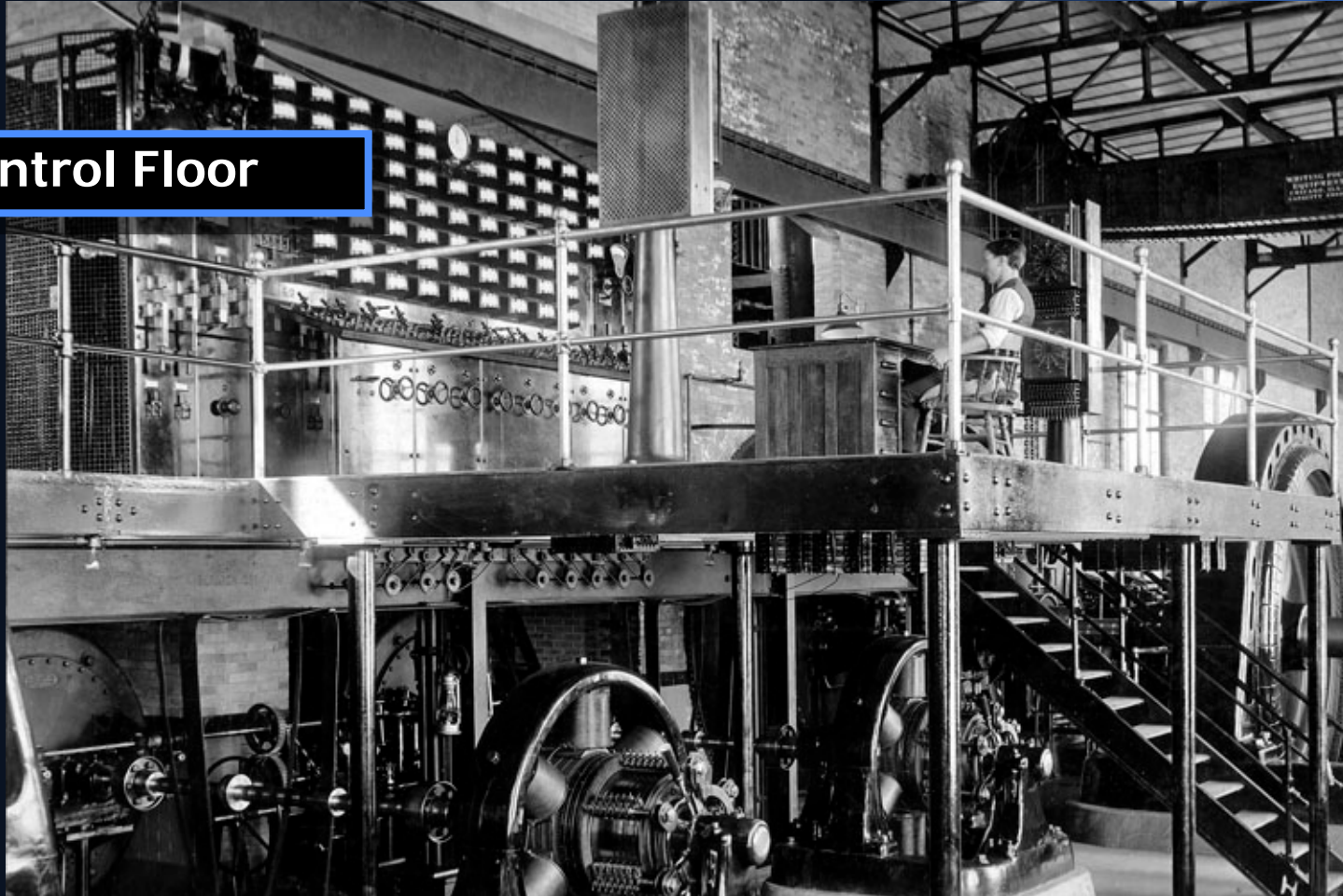


Generator Floor

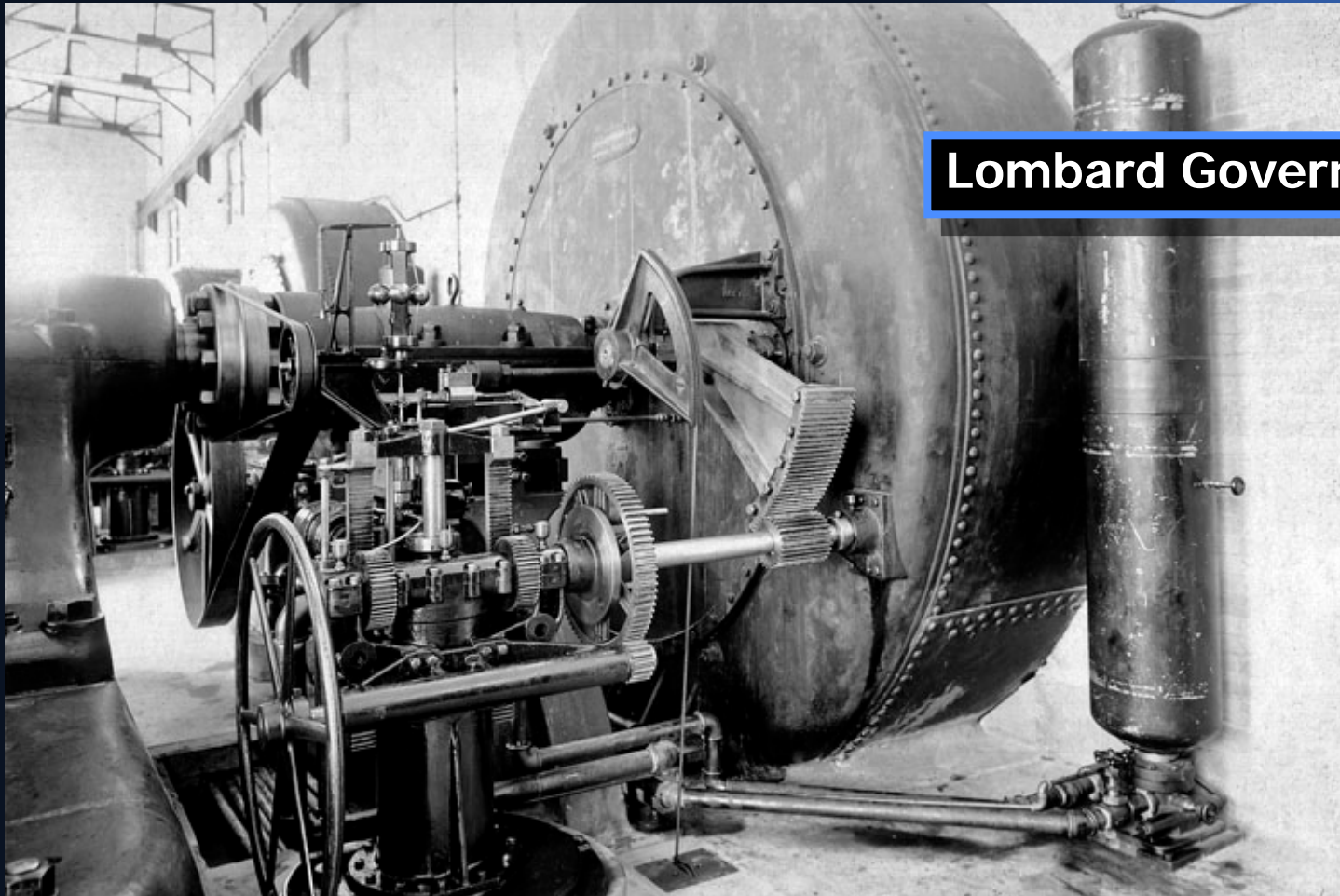
Pinawa



Control Floor



Pinawa

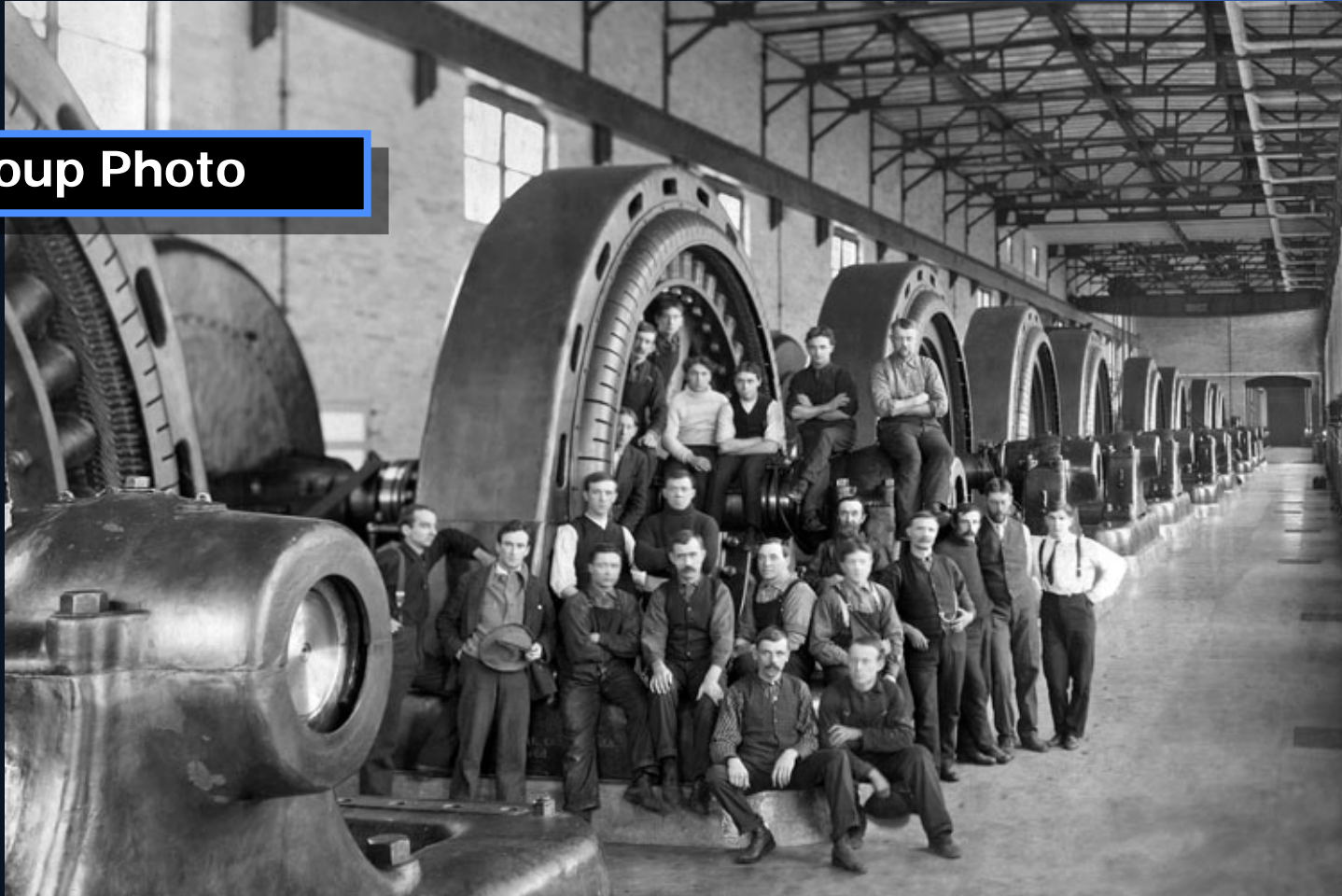


Lombard Governor

Pinawa



Group Photo



Pinawa



Transformer Gallery

Pinawa

Switchgear Room



Pinawa



**Group Photo for
Initial Opening**



Pinawa

Flood!



Pinawa



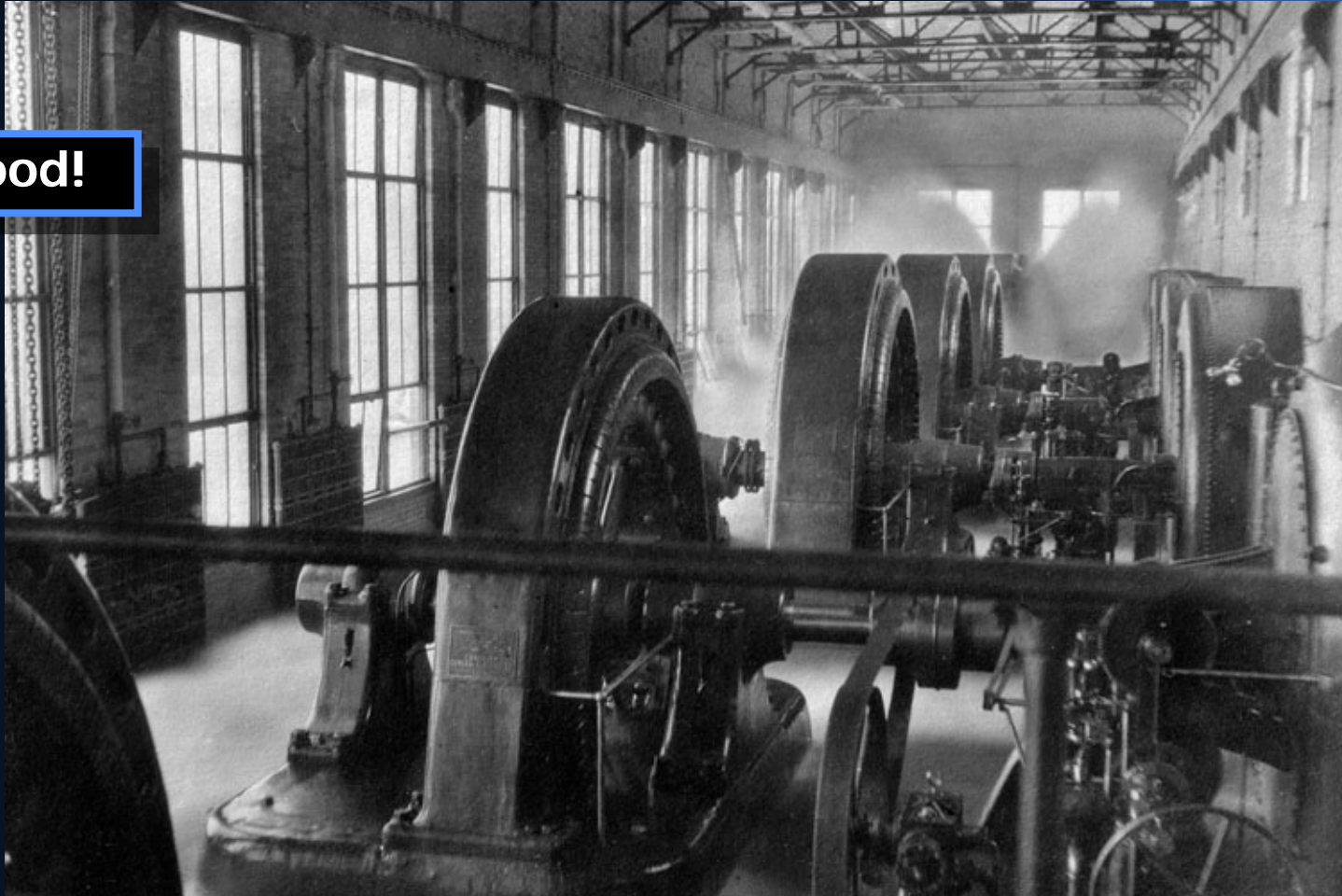
Flood!



Pinawa



Flood!



Pinawa



Town site

Pinawa



Construction Camp



Pinawa



Staff House

Pinawa



Horsepower



Pinawa



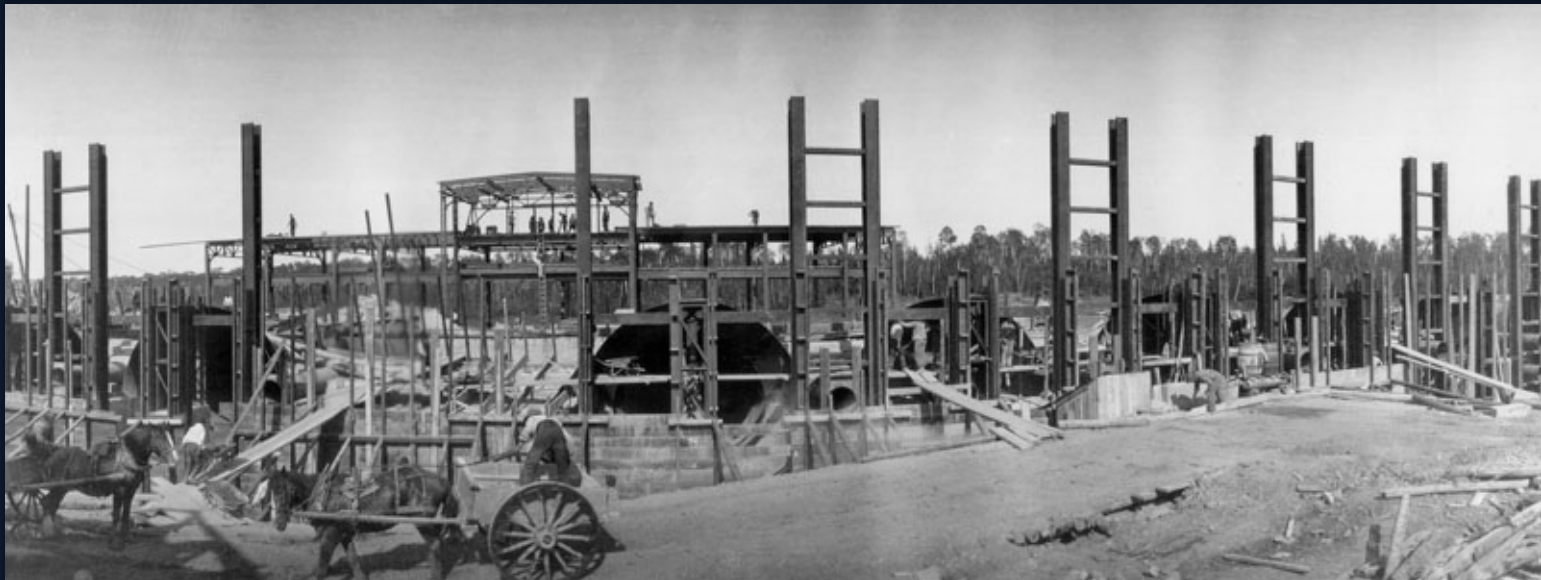
Power House Downstream



Pinawa



Power House Upstream



Pinawa



Power House End View



Pinawa



McCormick Turbine



Pinawa



Intake Channel



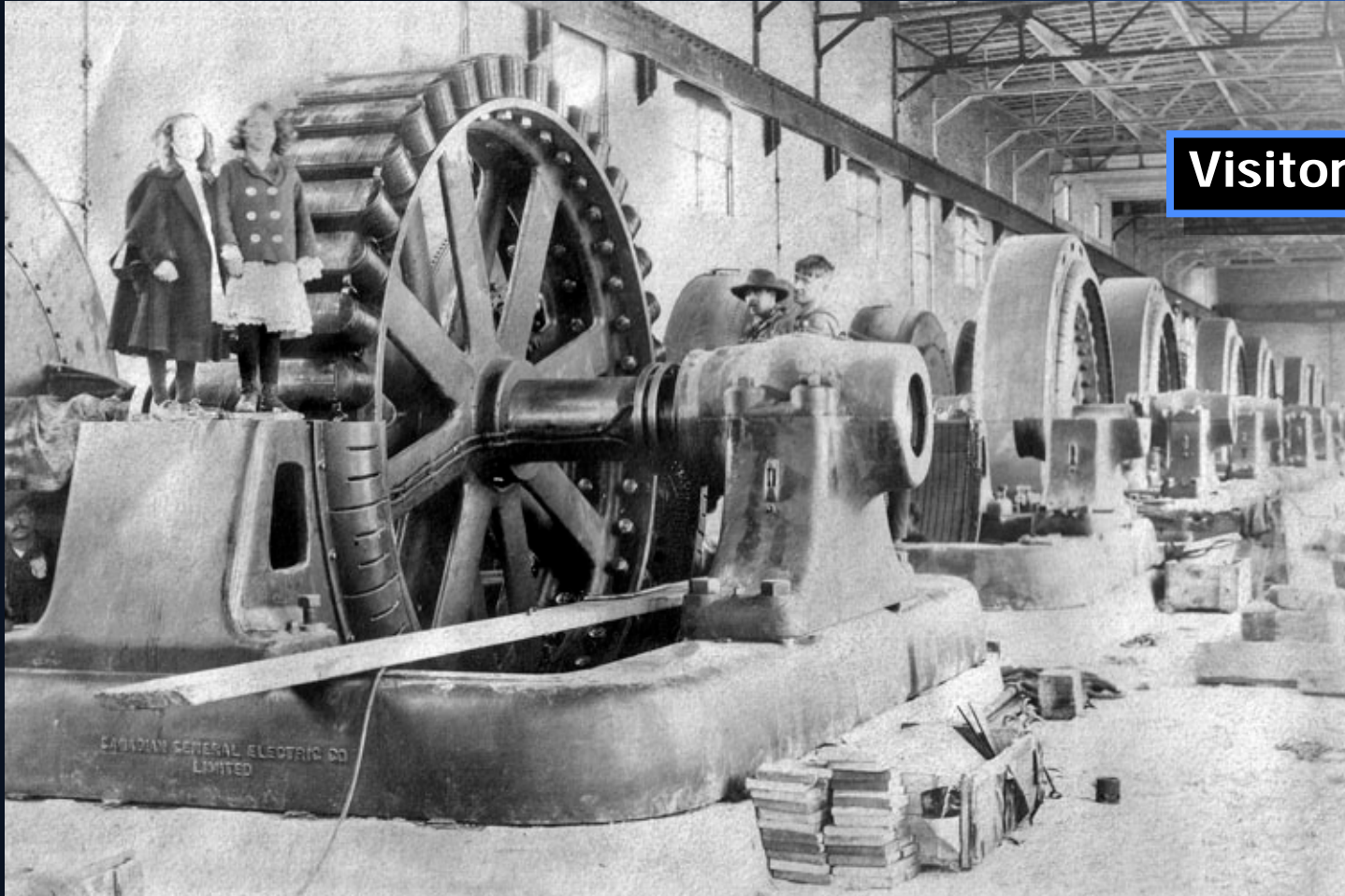
Pinawa



Penstocks



Pinawa



Visitors!

Pinawa



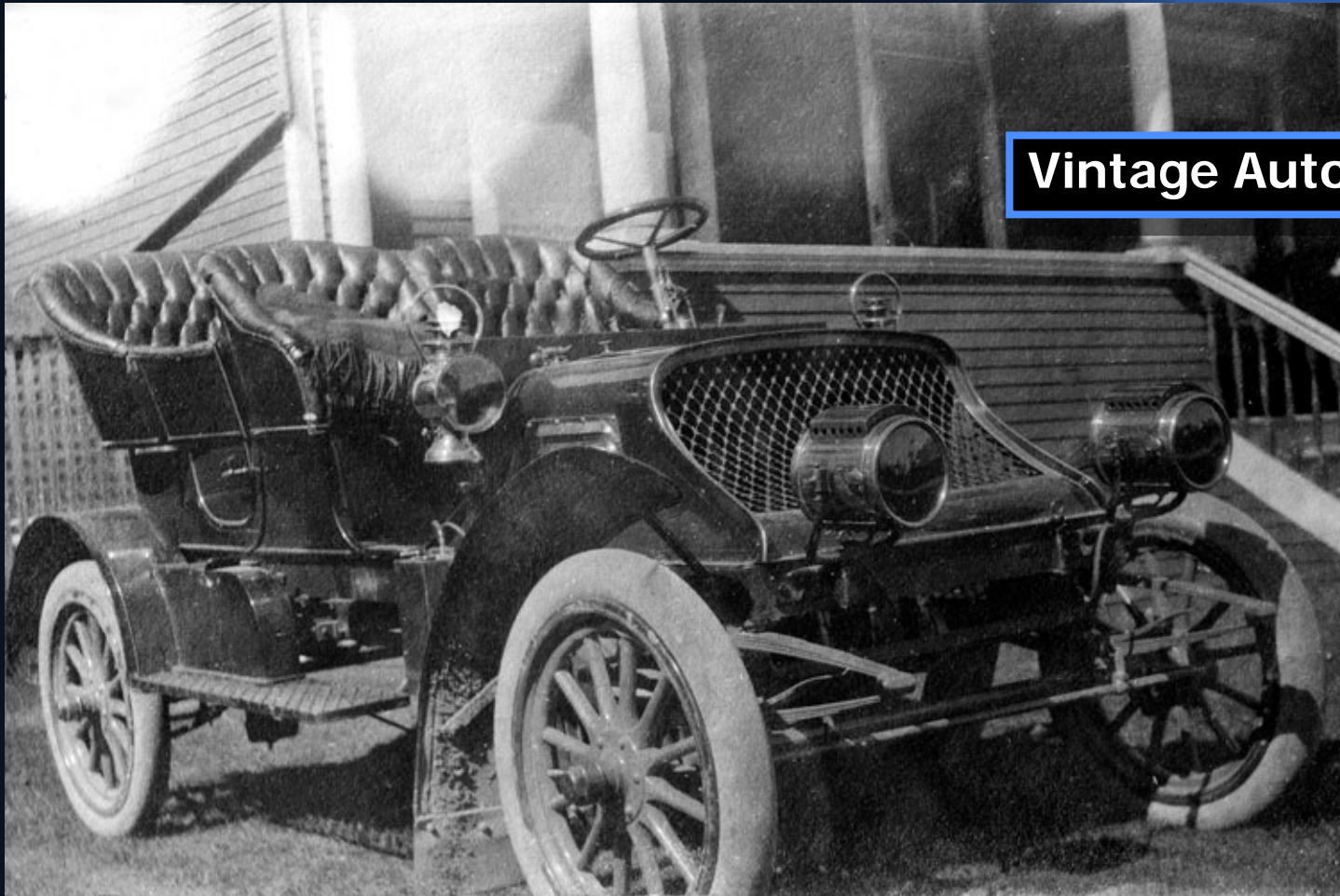
Ladies in Waiting

Pinawa

Corduroy Road



Pinawa



Vintage Auto

Pinawa



Break Time!

Pinawa

Homemade Flag



Pinawa

Three Bears



Pinawa



Group Photo

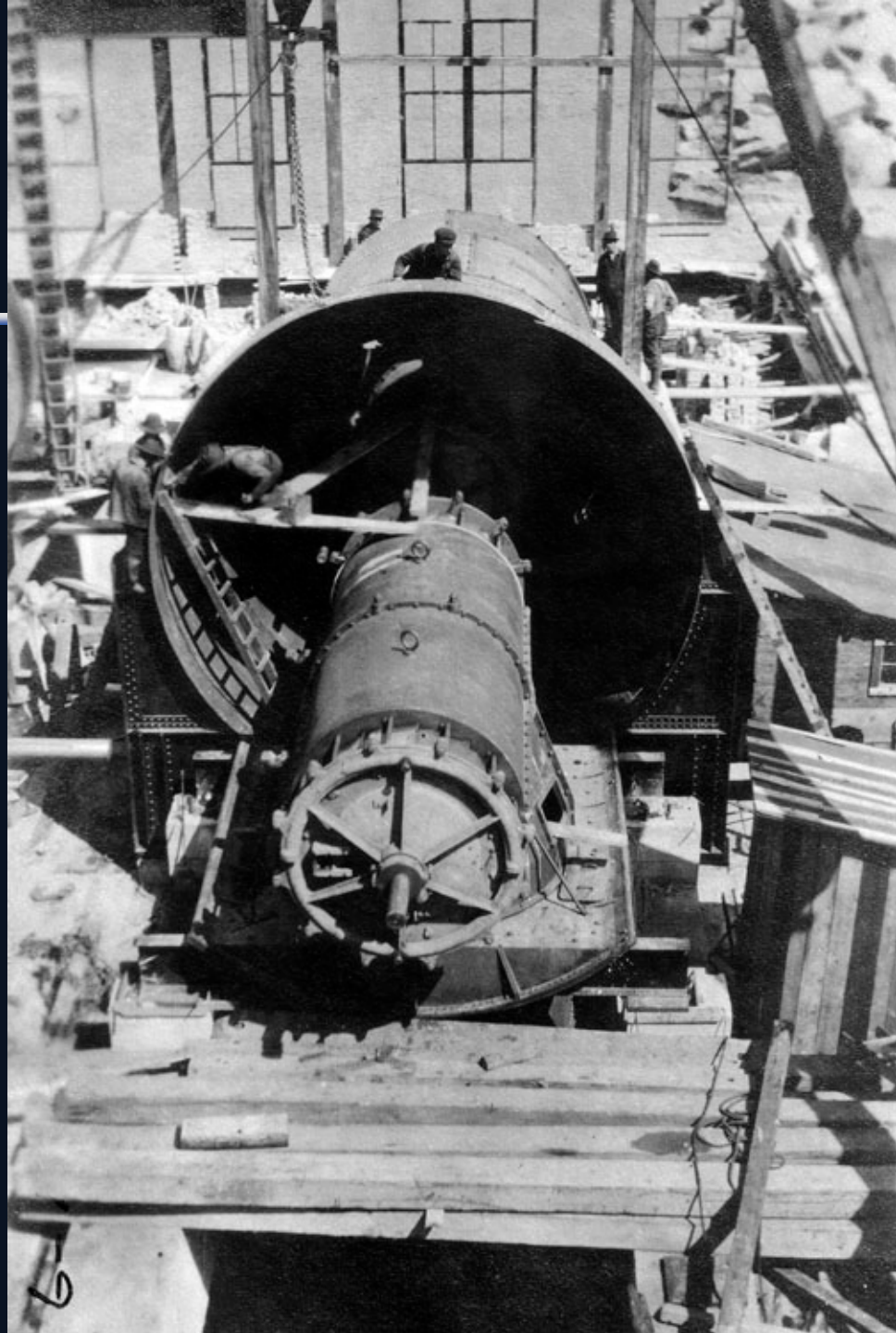
Pinawa



Trash Spillway

Pinawa

Turbine



Pinawa

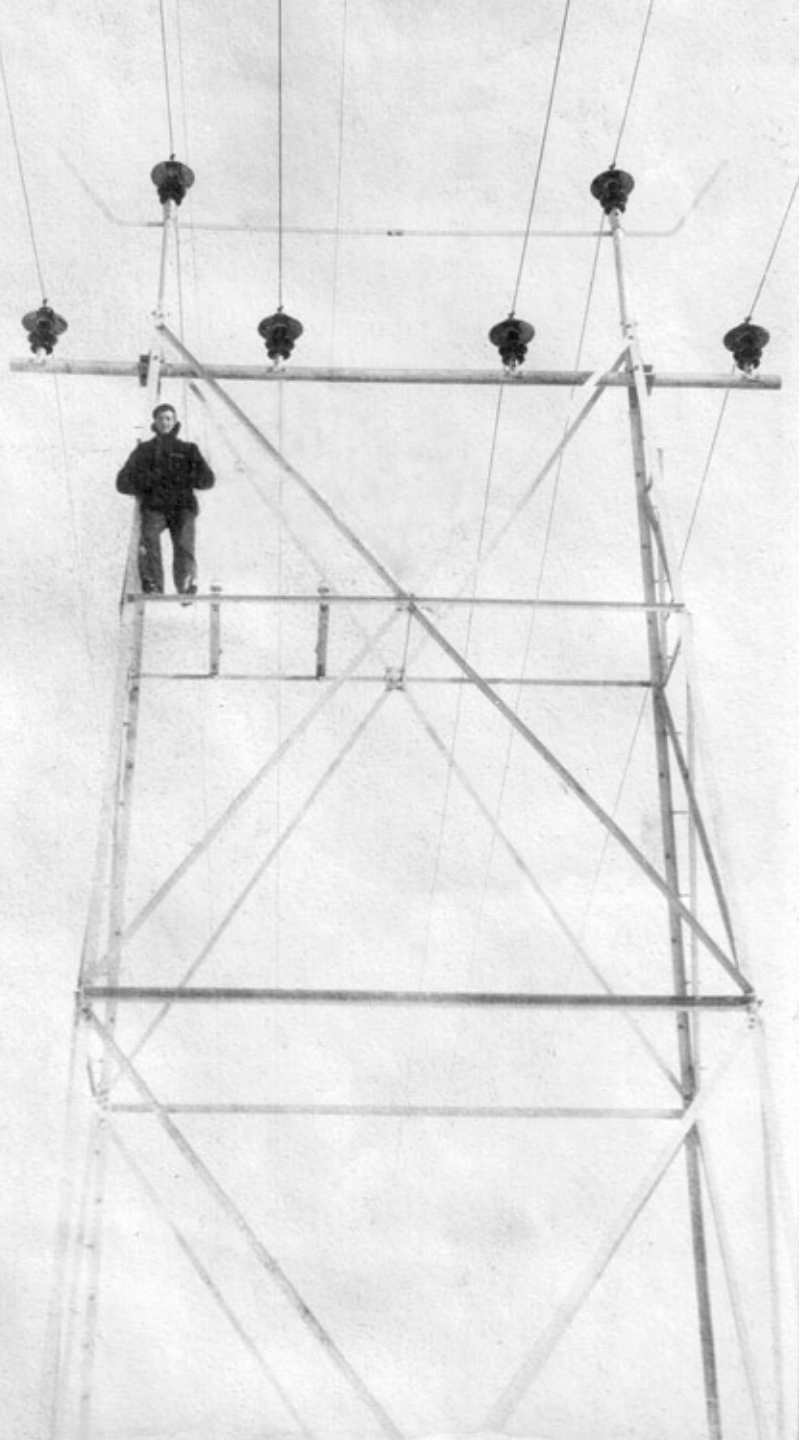


Dog Sled



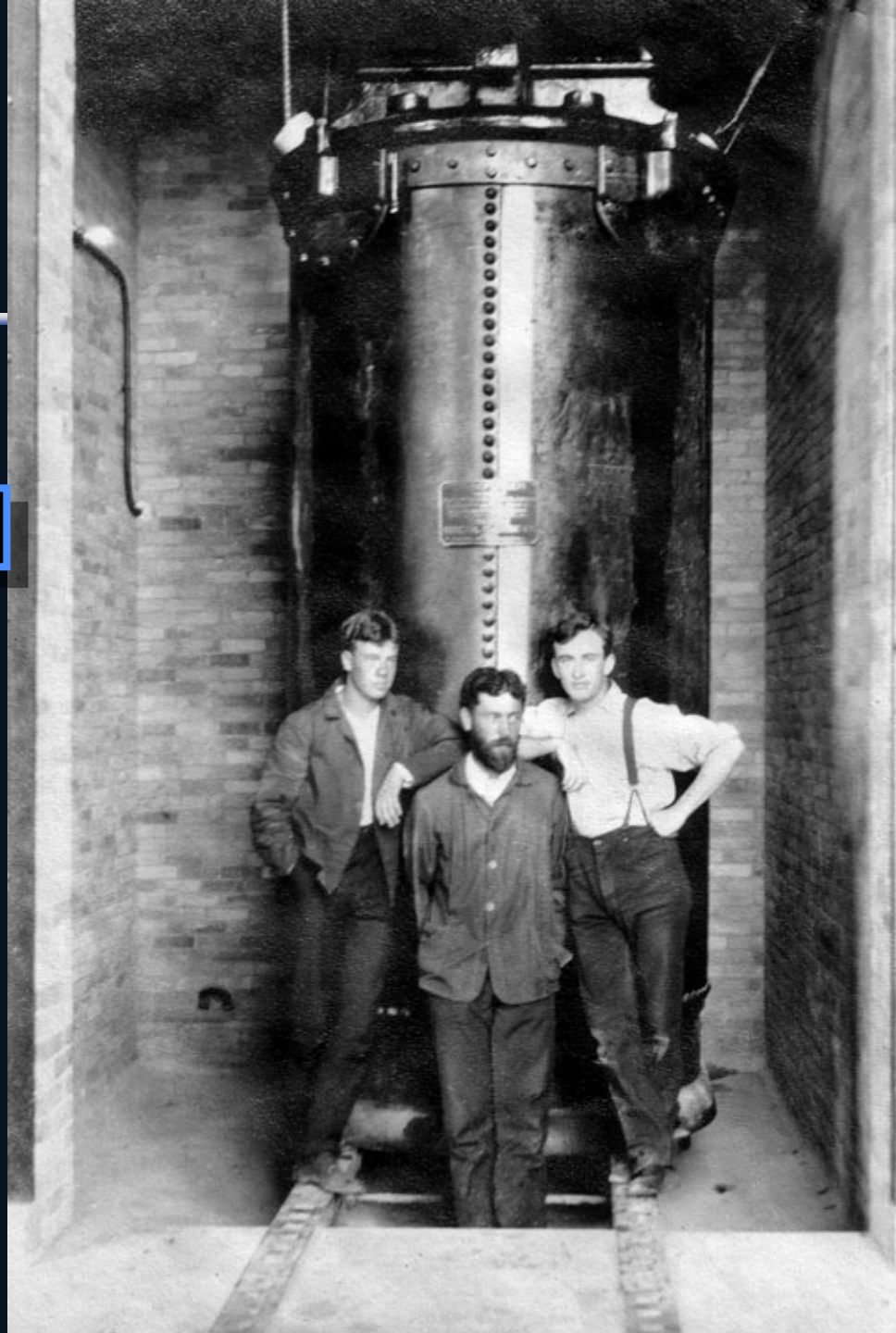
Pinawa

60 kV Transmission
Tower



Pinawa

Transformer Room



Pinawa

Turbine



Pinawa

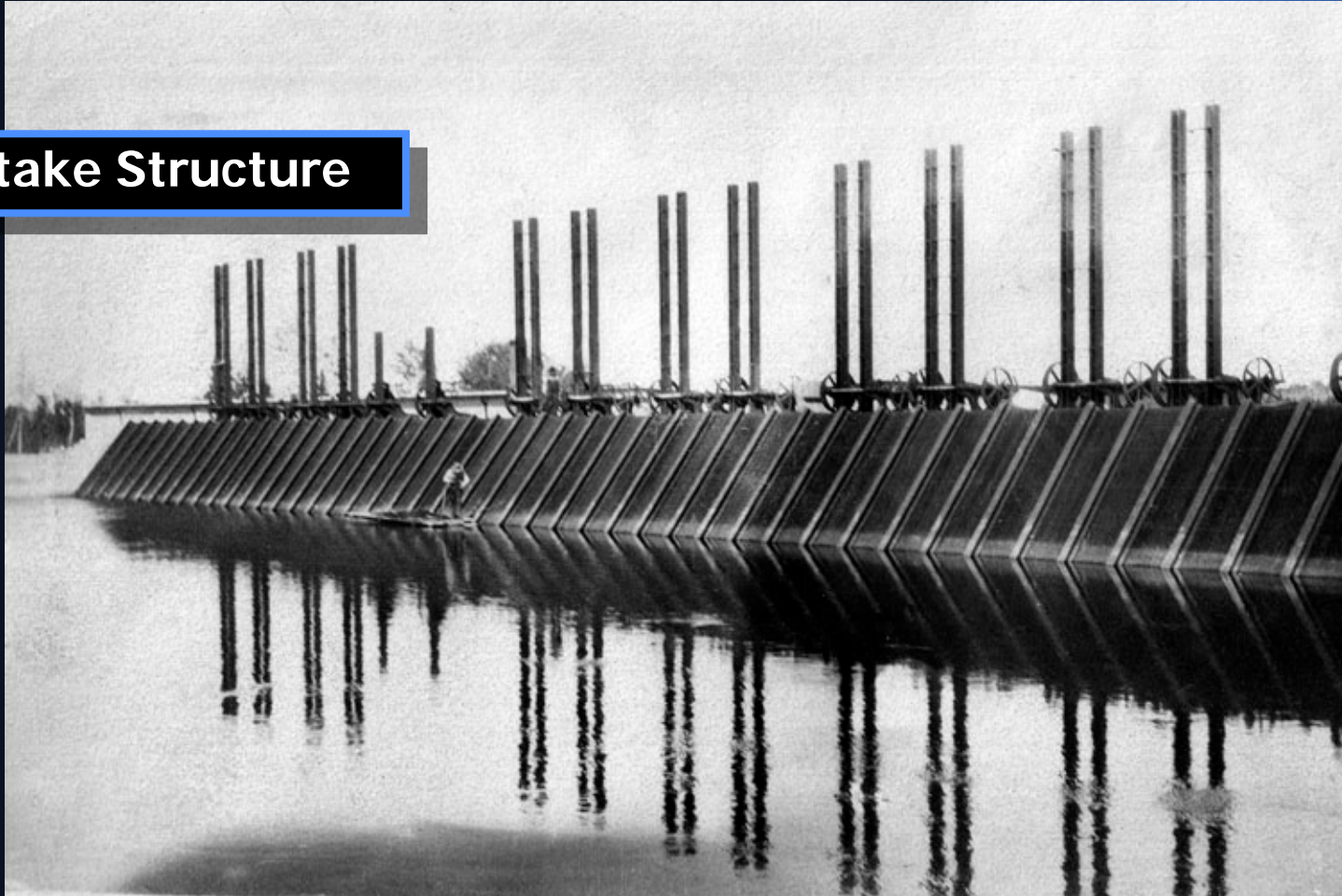


Another Group Photo

Pinawa



Intake Structure



Pinawa



Blacksmith's Shop



Pinawa



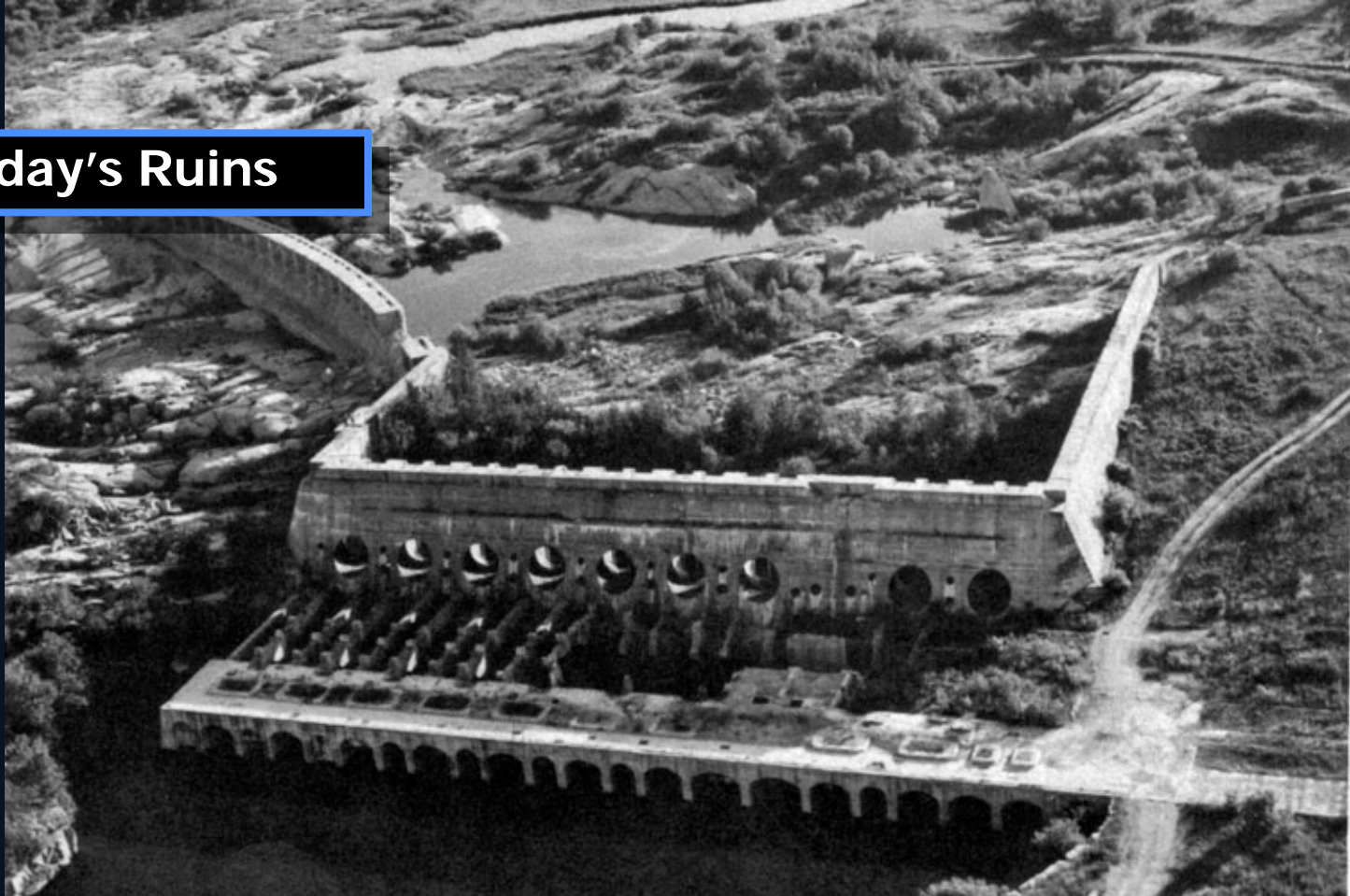
Aerial View



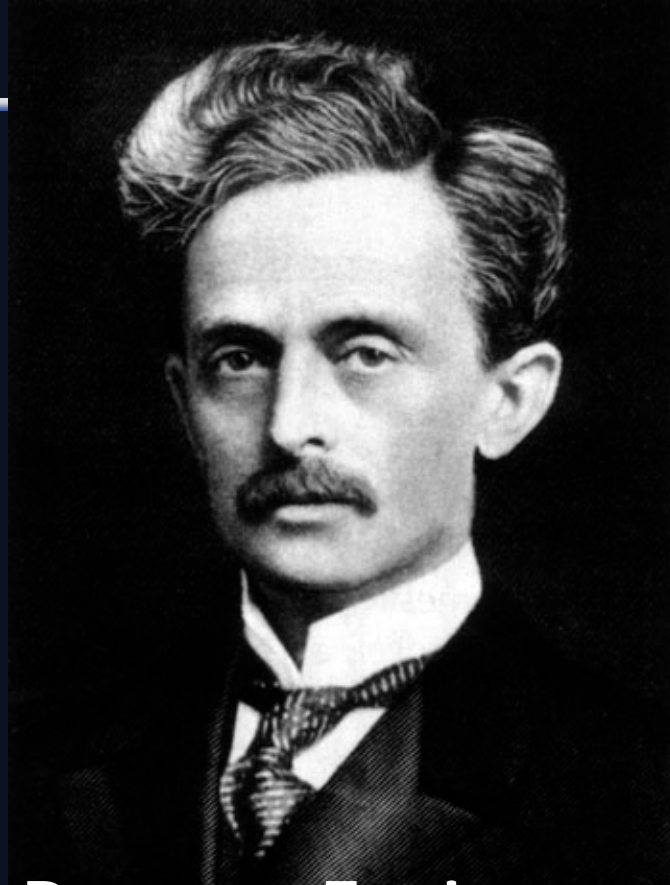
Pinawa



Today's Ruins



Pinawa



- **Fred Stark Pearson, Engineer and Entrepreneur. Founded the Pearson Engineering Company. Head Office, New York City.**



PINAWA

THE END

